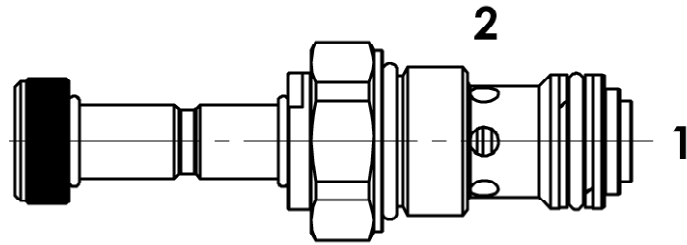
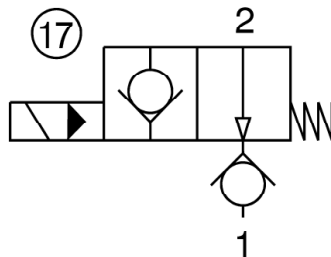


**2位, 先导控制电磁阀, 常开, bsp螺纹****2 way, pilot operated electric valve, normally open, bsp thread**

Rev.01-2019/07

**技术规格**

材料: 插件为镀锌钢, 内部为淬火钢。

流量范围:

2 - 70 L / min

最大压力: 350 bar

安装扭矩: 45/55 Nm

插孔: 21261

插件重量: 0,25 kg

线圈: 版本 C-13, 见 Y 章节

油温: -20°C + 80°C

环境温度范围: -30°C + 60°C

推荐过滤: 公称最大过滤 10 μ, ISO 4406 - 19/17/14 (NAS8) 或更少。

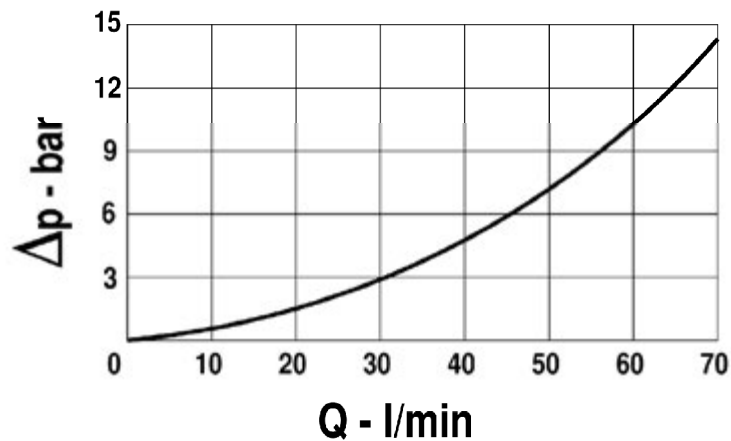
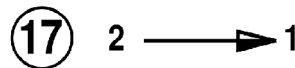
进口电压波动不得超过公称电压的 ±10%。

TECHNICAL SPECIFICATIONS**Materials:** cartridge in steel zinc plated, internal parts in hardened steel.**Flow range:**

2-70 L/min

Max. pressure: 350 bar**Installation torque:** 45/55 Nm**Cavity:** 21261**Cartridge weight:** 0,25 Kg**Coils:** version C-13, see section Y**Oil temperature:** -20°C + 80°C**Ambient temperature range:** -30°C + 60°C**Recommended filtration:** nominal max. 10 μ, ISO 4406-19/17/14 (NAS8) or less.

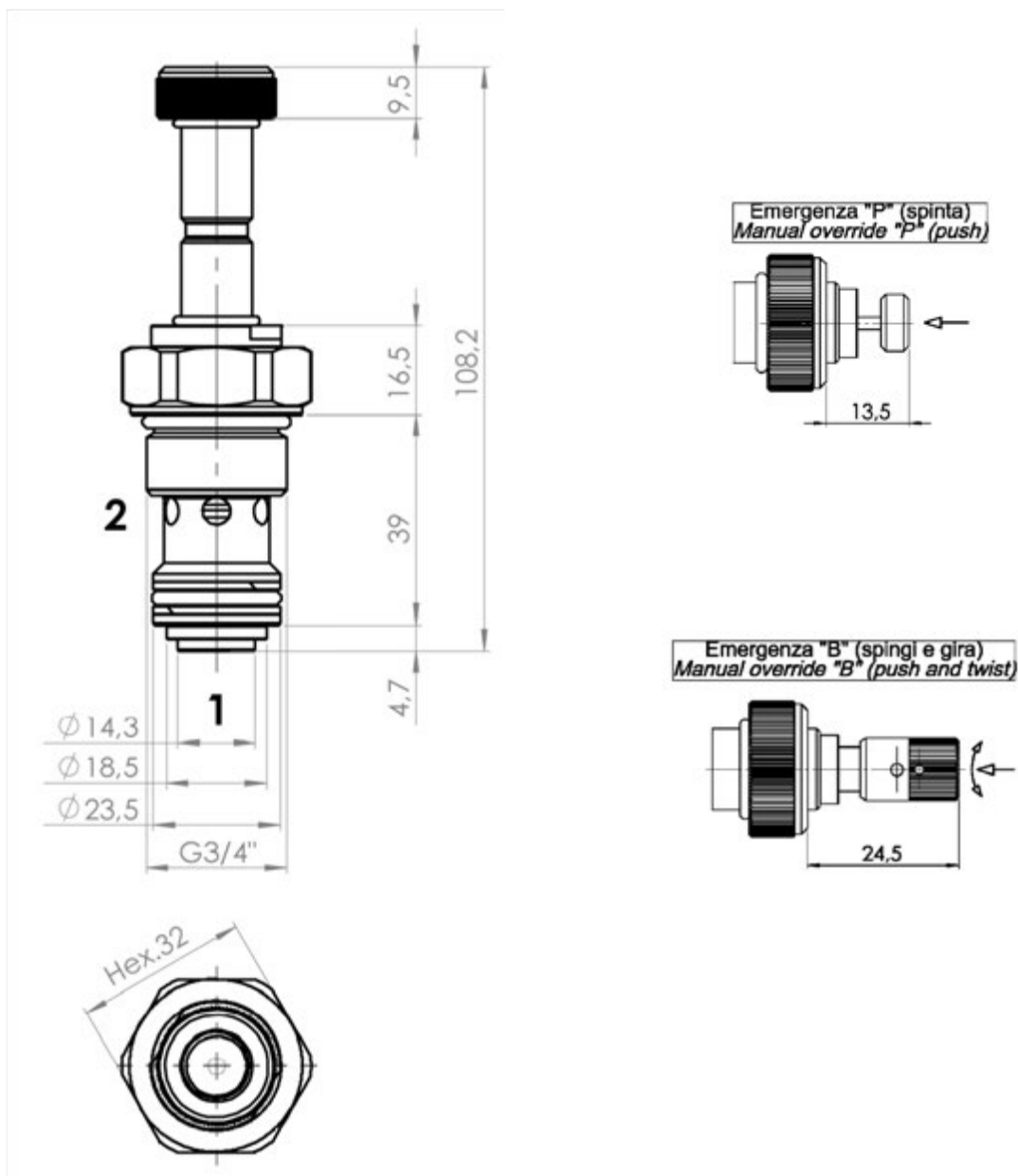
Inlet voltage fluctuations must not exceed ±10% of nominal voltage.

压降曲线**PRESSURE DROP CURVES**



2位, 先导控制电磁阀, 常开, bsp螺纹
2 way, pilot operated electric valve, normally open, bsp thread

Rev.01-2019/07



订购代码示例 - ORDERING CODE EXAMPLE

FP 22 CP 3 / 4 17 * *

3/4 . 3/4+BSPP
 尺寸 - Dimension

17 . normalmente aperta, unidirezionale . normally closed,
 液压机能 . Hydraulic scheme

密封材质. Seals:
 V=Viton *

材质如果是丁晴省略 . Omit if BUNA-N

手动按钮 . Manual override P =
 推式 - push *

B = 推扭式 . push and twist
 如不需要省略 . Omit if not required