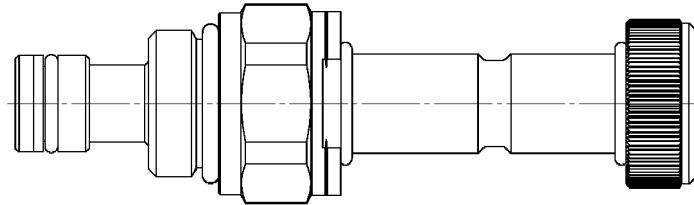
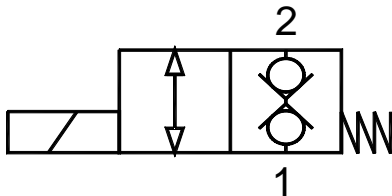


**Valvola elettrica 2 vie, diretta, normalmente chiusa**
2 way, direct operated electric valve, normally closed

Rev.03-2019/07

**SPECIFICHE TECNICHE**

Materiali: cartuccia in acciaio zincato. Componenti interni in acciaio trattato termicamente.

Campo di portata: 15 L/min;

Pressione max.: 310 bar (Bobina 20 W)

Coppia di serraggio in cavità: vedere pag.2

Cavità: vedere sezione X

Peso cartuccia: vedere pagina 2

Bobine: versione C-13, vedere sezione Y

Temperatura olio: -20°C + 80°C

Temperatura ambiente: -30°C + 60°C

Filtrazione consigliata: nominale max. 10µ, ISO 4406-19/17/14 (NAS8) o minore

La variazione di voltaggio in ingresso non deve eccedere il ±10% del valore nominale.

TECHNICAL SPECIFICATIONS

Materials: cartridge in steel zinc plated, internal parts in hardened steel.

Flow range: 15 L/min;

Max. pressure: 310 bar (Coil 20 W)

Installation torque: see page 2

Cavity: see section X

Cartridge weight: see page 2

Coils: version C-13, see section Y

Oil temperature: -20°C + 80°C

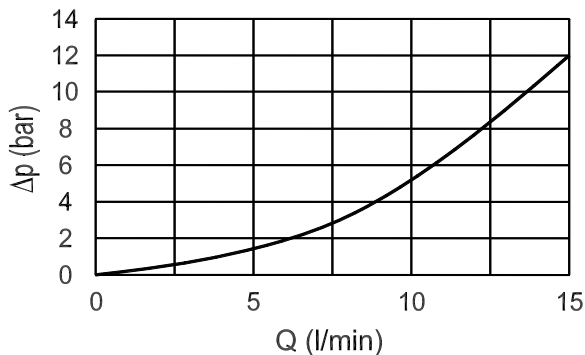
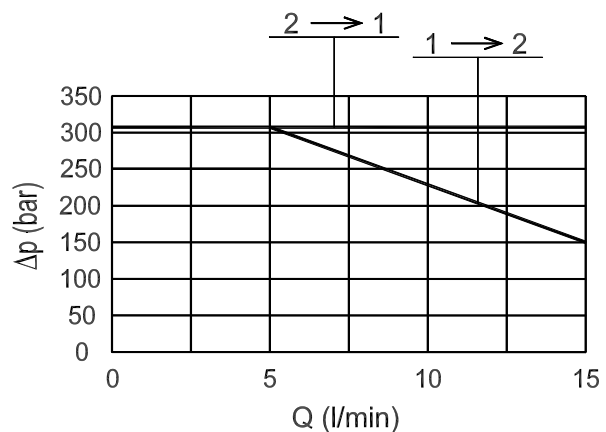
Environment temperature: -30°C + 60°C

Recommended filtration: nominal max. 10µ, ISO 4406-19/17/14 (NAS8) or less.

Inlet voltage fluctuations must not exceed ±10% of nominal voltage.

DIAGRAMMA PERDITE DI CARICO
PRESSURE DROP CURVES

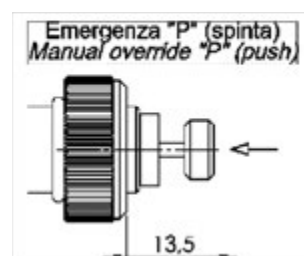
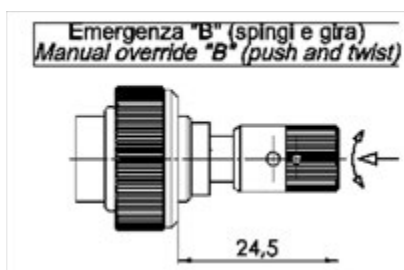
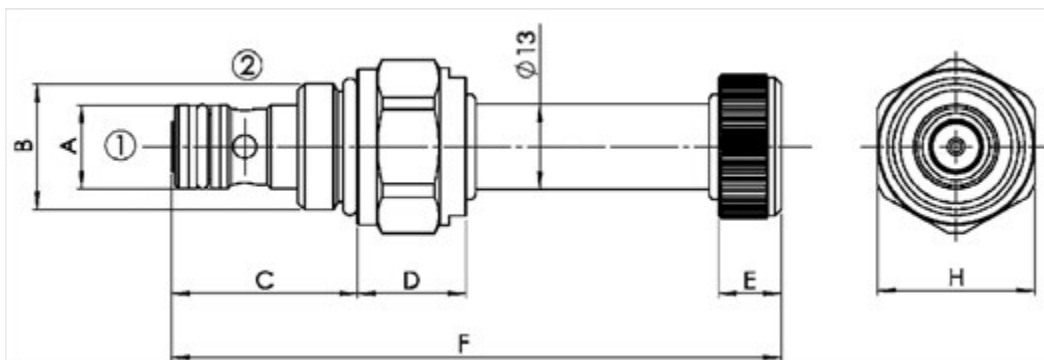
Valvola aperta (bobina eccitata) 2 → 1
Valve open (energized coil) 1 → 2

**LIMITI DI FUNZIONAMENTO**
PERFORMANCE LIMITS



Valvola elettrica 2 vie, diretta, normalmente chiusa
2 way, direct operated electric valve, normally closed

Rev.03-2019/07



TIPO TYPE	A	B	C	D	E	F	H	CAVITA' CAVITY	COPPIA DI SERRAGGIO INSTALLATION TORQUE	PESO WEIGHT
	mm	SAE	mm	mm	mm	mm	mm		Nm	Kg
FP-22-SD-S08-04	12.7	3/4"-16 UNF-2A	27.5	16.5	9.5	92	24	23081	35 – 45	0.130
FP-22-SD-S08-04-S	12.7	3/4"-16 UNF-2A	27.5	16.5	9.5	92	24	23081	35 – 45	0.140

Per i corpi in cavità SAE a 2 vie, vedere pagina catalogo generale W 150/1
 For 2 way SAE cavity bodies, see page W 150/1 in technical catalogue

ESEMPIO DI ORDINAZIONE - ORDERING CODE EXAMPLE

FP 22 SD S08 04 * *

Guarnizioni . Seals: V=Viton *
 Omettere se BUNA-N . Omit if BUNA-N
 Emergenza . Manual override
 P = spinta - push *
 B = spinta e giro . push and twist
 Omettere se non richiesta . Omit if not required