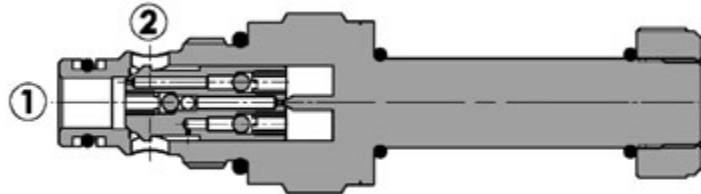
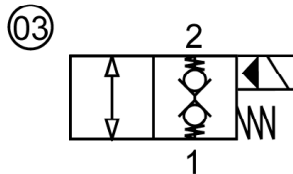
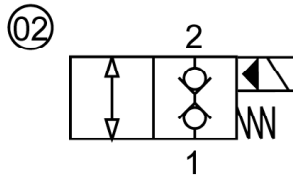




Valvola elettrica 2 vie, pilotata, doppia tenuta, normalmente chiusa
2 way, pilot operated electric valve, double lock poppet, normally closed

Rev.04-2019/04



SPECIFICHE TECNICHE

Materiali: cartuccia in acciaio zincato. Componenti interni in acciaio trattato termicamente.

Campi di portata:

S08: 1-50 L/min; S10: 5-70 L/min; S12: 10-140 L/min; S16: 10-150 L/min

Pressione max.: 350 bar

Coppia di serraggio in cavità: vedere pag.2

Cavità: vedere sezione X

Peso cartuccia: vedere pagina 2

Bobine: versione C-13, vedere sezione Y

Temperatura olio: -20°C+80°C

Temperatura ambiente: -30°C+60°C

Filtrazione consigliata: nominale max. 10µ, ISO 4406-19/17/14 (NAS8) o minore

La variazione di voltaggio in ingresso non deve eccedere il ±10% del valore nominale.

TECHNICAL SPECIFICATIONS

Materials: cartridge in steel zinc plated, internal parts in hardened steel.

Flowrange:

S08: 1-50 L/min; S10: 5-70 L/min; S12: 10-140 L/min; S16: 10-150 L/min

Max. pressure: 350 bar

Installation torque: see page 2

Cavity: see section X

Cartridge weight: see page 2

Coils: version C-13, see section Y

Oil temperature: -20°C+80°C

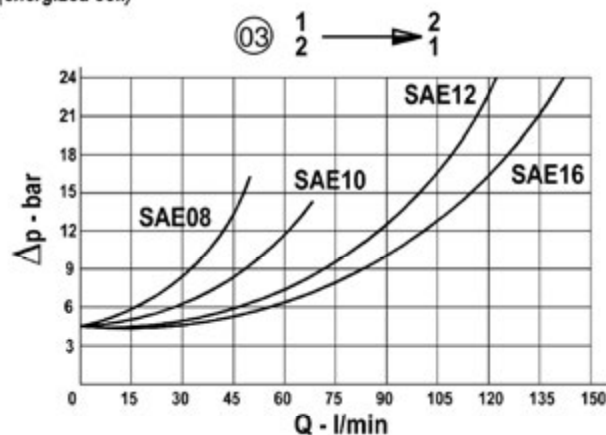
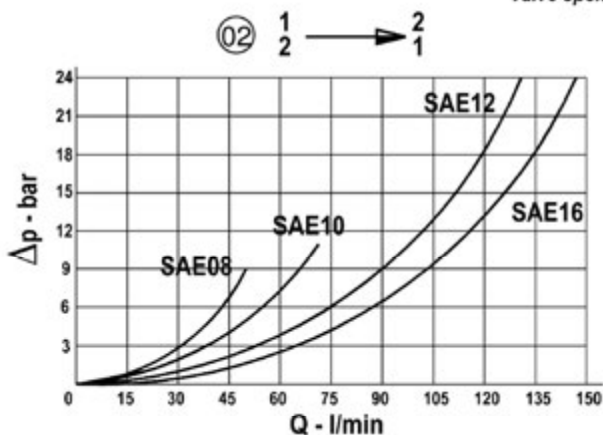
Ambient temperature range: -30°C+60°C

Recommended filtration: nominal max. 10µ, ISO 4406-19/17/14 (NAS8) or less.

Inlet voltage fluctuations must not exceed ±10% of nominal voltage.

DIAGRAMMA PERDITE DI CARICO PRESSURE DROP CURVES

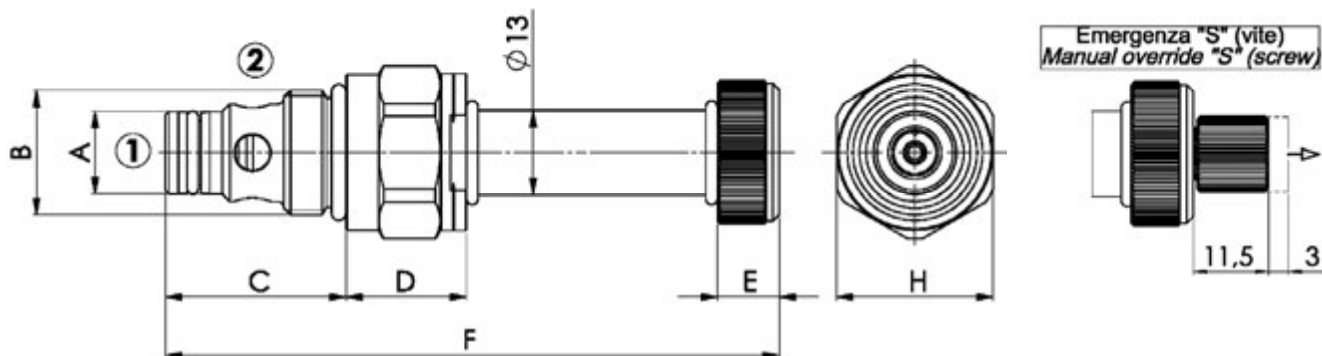
Valvola aperta (bobina eccitata)
Valve open (energized coil)





Valvola elettrica 2 vie, pilotata, doppia tenuta, normalmente chiusa
2 way, pilot operated electric valve, double lock poppet, normally closed

Rev.04-2019/04



TIPO TYPE	A	B	C	D	E	F	H	CAVITA' CAVITY	COPIA DI SERRAGGIO INSTALLATION TORQUE	PESO WEIGHT
	mm	SAE	mm	mm	mm	mm	mm			
FP-22-PD-S08-02/03	12.7	3/4"-16 UNF-2A	27.7	18.5	9.5	94.2	24	23081	35 – 45	0.140
FP-22-PD-S08-02/03-S	12.7	3/4"-16 UNF-2A	27.7	18.5	9.5	94.2	24	23081	35 – 45	0.150
FP-22-PD-S10-02/03	15.87	7/8"-14 UNF-2A	32.5	20	9.5	100.5	27	23101	45 – 55	0.190
FP-22-PD-S10-02/03-S	15.87	7/8"-14 UNF-2A	32.5	20	9.5	100.5	27	23101	45 – 55	0.200
FP-22-PD-S12-02/03	22.22	1 1/16"-12 UN-2A	46	18	9.5	112	32	23121	55 – 65	0.270
FP-22-PD-S12-02/03-S	22.22	1 1/16"-12 UN-2A	46	18	9.5	112	32	23121	55 – 65	0.280
FP-22-PD-S16-02/03	28.56	1 5/16"-12 UN-2A	46.5	16.5	9.5	111	40	23161	80 – 90	0.370
FP-22-PD-S16-02/03-S	28.56	1 5/16"-12 UN-2A	46.5	16.5	9.5	111	40	23161	80 – 90	0.380

Per i corpi in cavità SAE a 2 vie, vedere pagina catalogo generale W 150/1
 For 2 way SAE cavity bodies, see page W 150/1 in technical catalogue

ESEMPIO DI ORDINAZIONE - ORDERING CODE EXAMPLE

FP 22 PD S08 02 * *

S08 . 3/4"-16 UNF
 * S10 . 7/8"-14 UNF
 S12 . 1 1/16"-12 UN
 S16 . 1 5/16"-12 UN
 Dimensione - Dimension

Guarnizioni . Seals:
 V=Viton *
 Omettere se BUNA-N . Omit if BUNA-N

Emergenza . Manual override
 S = vite - screw *
 Omettere se non richiesta . Omit if not required

02 . doppia tenuta, normalmente chiusa . normally closed, dual seal
 * 03 . doppia tenuta, normalmente chiusa, extra molla . normally closed, dual seal, extra spring
 Schema idraulico . Hydraulic scheme